



Megaport Terraform Provider

**Megaport + IaC:
Automating Global Networks at DevOps Speed**

Mark Austen
Solutions Architect
[linkedin.com/in/mark-austen](https://www.linkedin.com/in/mark-austen)
mark.austen@megaport.com

Miwa Fujii
Community Manager - Terraform
[linkedin.com/in/miwafujii](https://www.linkedin.com/in/miwafujii)
miwa.fujii@megaport.com

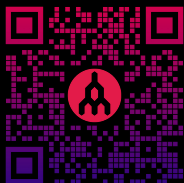


Agenda

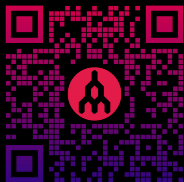
- **About Megaport**
- **About Terraform**
- **About Megaport Terraform Provider**
- **Getting started: Prerequisites**
- **Creating and managing Megaport's services with Terraform**
- **Recent updates**
- **QA**

Useful resources

- [Megaport docs page: Megaport Terraform Provider](#)



- [Github: terraform-provider-megaport](#)



Prerequisites

1. Understand Megaport's services
 2. Understand Megaport's Portal environments
 3. Create a Megaport account
 4. Add and modify users
 5. Create an API Key
 6. Install HashiCorp Terraform platform
 7. Have access to GitHub
 8. Install your preferred code editor
-

Creating a Configuration File

1. Design your network with Megaport services
2. Identify the Megaport enabled location name, site code, or ID
3. Define the Megaport Terraform Provider environment
4. Prepare your Terraform directory
 - Prepare [provider.tf](#) and [maint.tf](#) files
 - Understand the Terraform behaviour
5. Demo

Creating and Managing Services

- Importance of using the staging environment
- Terraform commands
- Demo



Terraform State Management

- What is Terraform state?
- Terraform state for Megaport resources
- Recommended practices
- Demo

Importing Existing Production Services

- Demo



Recent updates

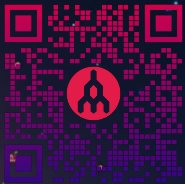
[Latest Terraform version = v1.4.6](#)

- [BREAKING CHANGE: Location Data Source Migration](#)
 - Use Location ID
 - [Location ID search page in docs.megaport.com](#)
- Support of 400 Gbps Ports in locations where available (v1.4.4).
- Support for 48 and 60-month contract terms for Ports, VXC's, MCRs, and MVEs (v.1.4.4).
- [New MCR Prefix Filter List Resources](#) for better lifecycle management.
- [PreventDestroy and safeDelete: Example](#)
 - How to use lifecycle { prevent_destroy = true } on Ports, MCRs, and VXC's

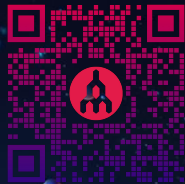


- **QA**
- [Megaport Terraform Provider Releases page](#)
- docs.megaport.com/terraform/megaport-terraform-provider-faq/
- [Contact support](#) or create a [GitHub issue](#)
- Any comment / suggestions: miwa.fujii@megaport.com
- Pop up survey





docs.megaport.com/terraform/




github.com/megaport/terraform-provider-megaport

Thank you & Questions

 @Megaport

 @Megaportnetwork

 @Megaportnetworks

ASX: MP1

[Megaport.com/investor](https://megaport.com/investor)

[Megaport.com/newsroom](https://megaport.com/newsroom)

Mark Austen
Solutions Architect
linkedin.com/in/mark-austen
mark.austen@megaport.com

Miwa Fujii
Community Manager - Terraform
linkedin.com/in/miwafujii
miwa.fujii@megaport.com

